



10  
Blowing Rock

# Appendix A - Page 1 of 2

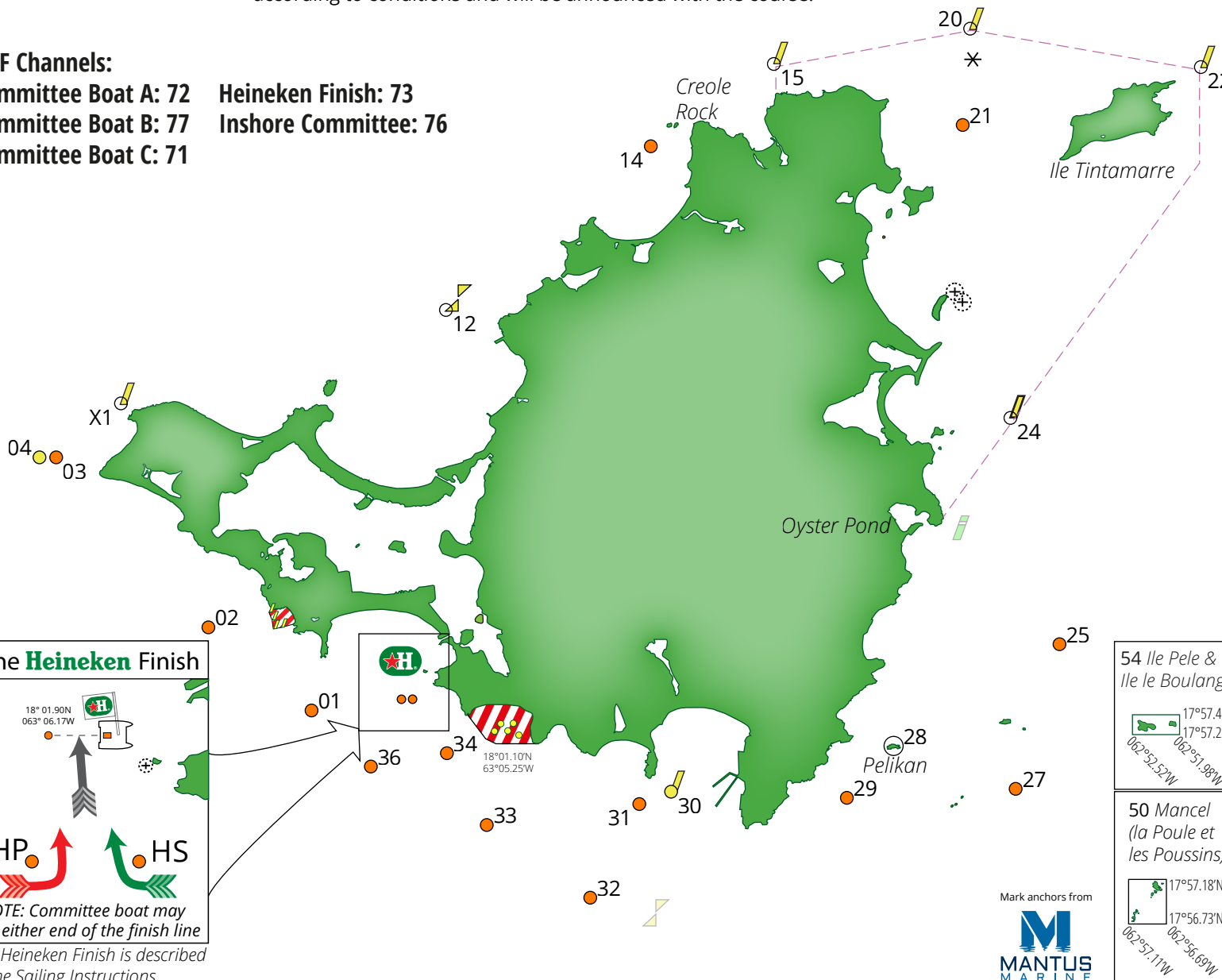
Diagrams shown here are for illustration purposes only. Positions shown are approximate. Inflated marks shown may not be set unless they will be used. Marks 90 to 99 will only be set if required: their position will be set according to conditions and will be announced with the course.



## VHF Channels:

Committee Boat A: 72  
Committee Boat B: 77  
Committee Boat C: 71

Heineken Finish: 73  
Inshore Committee: 76



## Marks

HP	18° 01.54N	063° 06.13W	Orange inflated
HS	18° 01.54N	063° 06.02W	Orange inflated
01	18° 01.43N	063° 07.05W	Orange inflated
02	18° 02.23N	063° 08.10W	Orange inflated
03	18° 03.87N	063° 09.65W	Orange inflated
04	18° 03.87N	063° 09.82W	Yellow inflated
10	18° 08.99N	063° 09.71W	Blowing Rock
12	18° 05.29N	063° 05.68W	Bouée Médée
14	18° 06.87N	063° 03.59W	Orange inflated
15	18° 07.66N	063° 02.34W	Yellow spar
20	18° 08.00N	063° 00.34W	Yellow spar
21	18° 07.07N	063° 00.42W	Orange inflated
22	18° 07.63N	062° 57.99W	Yellow spar
24	18° 04.25N	062° 59.93W	Yellow spar
25	18° 02.07N	062° 59.43W	Orange inflated
27	18° 00.68N	062° 59.88W	Orange inflated
28	18° 01.09N	063° 01.12W	Pelikan
29	18° 00.59N	063° 01.60W	Orange inflated
30	18° 00.65N	063° 03.39W	Small yellow spar
31	18° 00.53N	063° 03.71W	Orange inflated
32	17° 59.63N	063° 04.21W	Orange inflated
33	18° 00.33N	063° 05.26W	Orange inflated
34	18° 01.02N	063° 05.67W	Orange inflated
36	18° 00.89N	063° 06.45W	Orange inflated
50	17° 56.96N	062° 56.89W	Mancel
51	17° 58.42N	062° 55.56W	Roche Plate
52	17° 57.50N	062° 54.15W	Ile Fourchue
53	17° 55.79N	062° 53.70W	Roche le Boeuf
54	17° 57.37N	062° 52.20W	Ile Pele & Ile le Boulanger
62	18° 14.91N	063° 15.19W	Dog Island

**The Heineken Finish**

NOTE: Committee boat may be either end of the finish line  
The Heineken Finish is described in the Sailing Instructions.

**54 Ile Pele & Ile le Boulanger**

**50 Mancel (la Poule et les Poussins)**



# Appendix A - Page 2 of 2

Diagrams shown here are for illustration purposes only.

## Laid marks

Symbol	Name	Description
▲	Windward	Inflated
↔	Spreader (offset)	Inflated
▼	Leeward	Inflated
●●	Leeward Gate	2 x inflated
★	Special	Inflated

All laid mark positions will be announced.

## Finish lines

Symbol	Description	Approx location
	Heineken Finish	Simpson Bay
	Committee Boat	Same CB as start
	Alternate	As announced

## VHF Channels:

Committee Boat A: 72  
 Committee Boat B: 77  
 Committee Boat C: 71

Heineken Finish: 73  
 Inshore Committee: 76

## Laid mark courses

Symbol	Marks in order with rounding
L2	▲ ↔ ●● ▲ ↔
L3	▲ ↔ ●● ▲ ↔ ●● ▲ ↔
S2	▲ ↔ ●● ▲ ↔
S3	▲ ↔ ●● ▲ ↔ ●● ▲ ↔
A2	▲ ▼ ▲ ▼ ▲ ▼ ★
A3	▲ ▼ ▲ ▼ ▲ ▼ ★
B2	▲ ▼ ▲ ▼ ★
B3	▲ ▼ ▲ ▼ ▲ ▼ ★

Spreader marks might not be laid: their use will be announced with the course. If a mark of a gate is missing, the remaining mark shall be rounded on the same side as the previous mark.

Red symbol = round to port Green symbol = round to starboard. Arrows shown here for monochrome printing.

## Laid mark course diagrams

